

## PYOTE installation (Windows) 9 January 2018

Outline of installation:

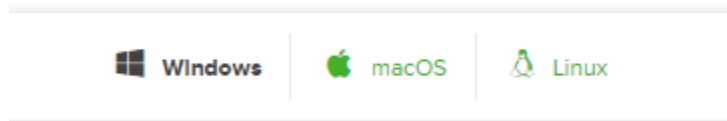
1. Install Anaconda from Internet
2. Install PYOTE from Internet
3. Test PYOTE installation
4. Add desktop icon to simplify starting up PYOTE

Step-by-step:

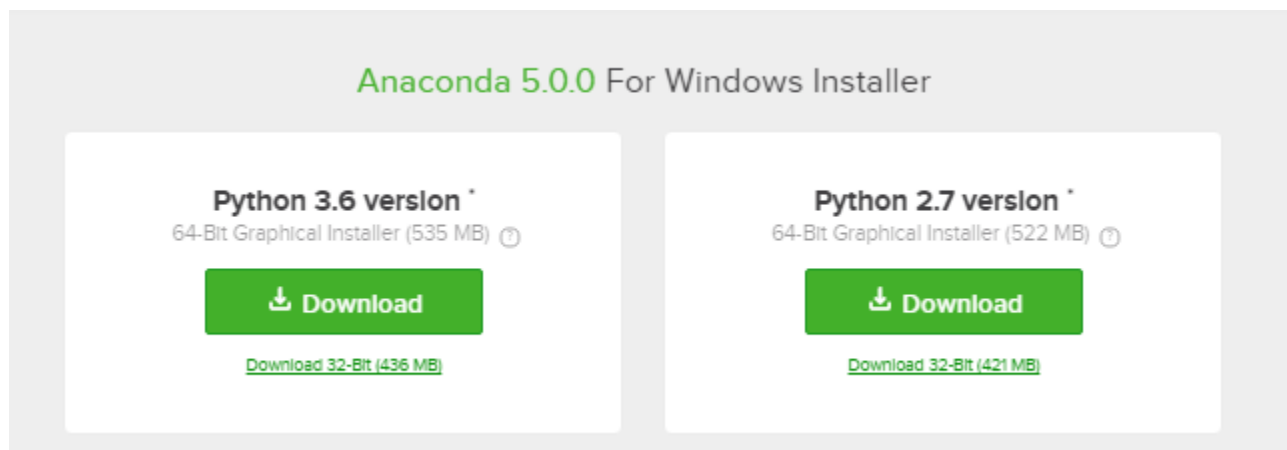
1. Install Anaconda3 from Internet. Here's an easy way to get to download site:

<https://www.anaconda.com/download/>

Once on the web page, somewhere on the page, you will have the option of selecting one of three types of downloads:

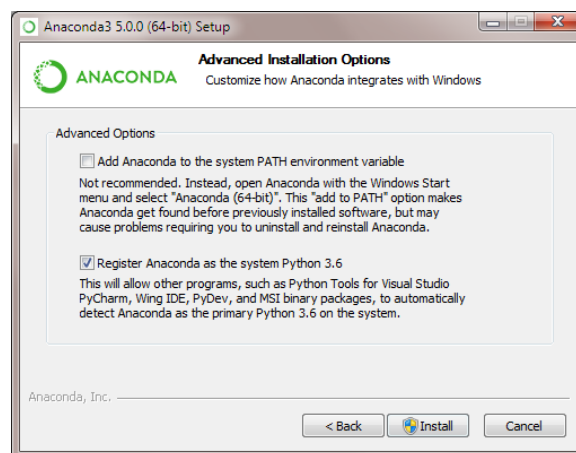
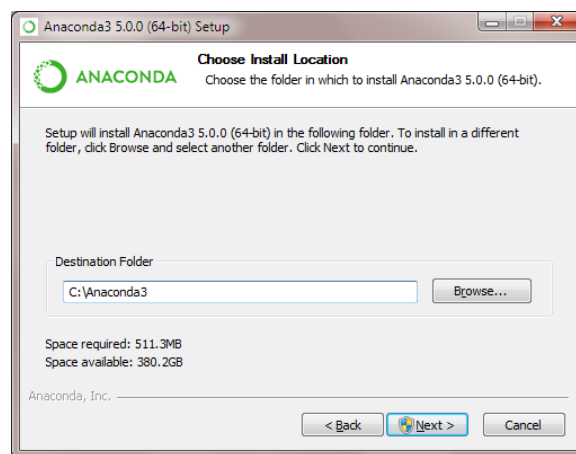
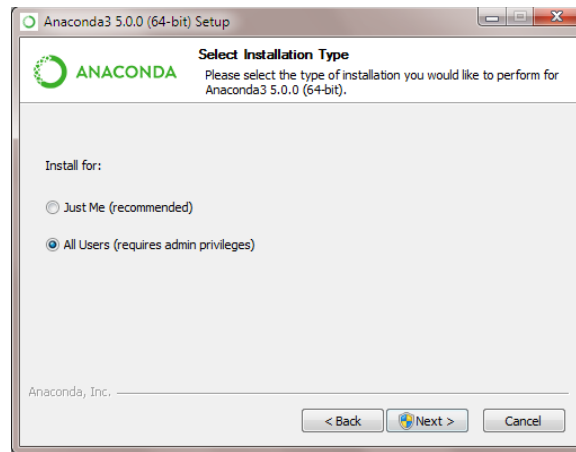


Select the 'Windows' download. The screen should now look like this:



Click on the Python 3.X version (shown as 3.6 in above example, but could be a later version) download button (select 64-bit or 32-bit as needed for your machine).

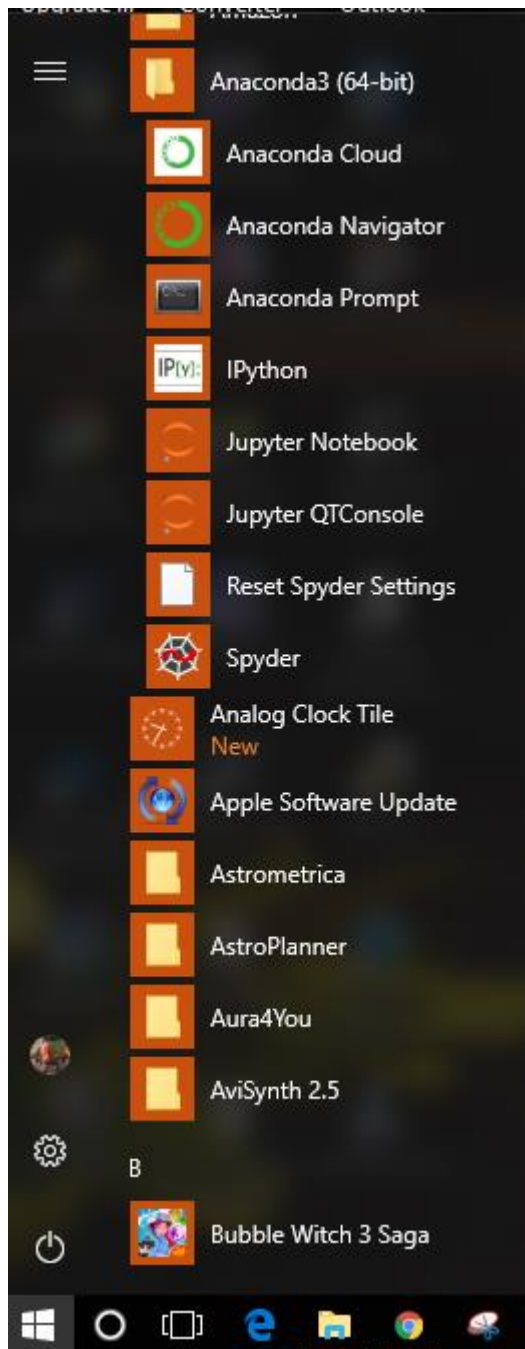
Once the download completes, execute (open) the downloaded exe and accept all the defaults from the installation script, except for the 'Install Location' you must install Anaconda to a C:\ root directory as follows:



2. Next, install PYOTE from Internet:

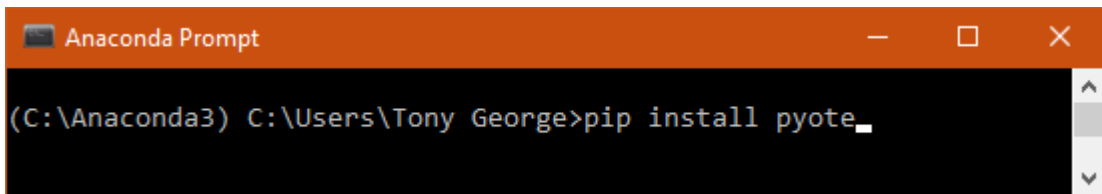
Open the Anaconda3 'Anaconda Prompt' console window from the Anaconda3 folder. You have to click on the Windows Start Menu in the lower left corner of your Windows screen, open the 'All Programs' menu, find

the Anaconda3 folder, and then find the Anaconda Prompt in the list of apps in the folder. Here is a screen shot of where to find the Anaconda Prompt:



The above is for Windows 10, but Windows 7 will look similar.

The Anaconda Prompt window may sit idle for quite a while, while it searches the internet. Wait for the > prompt to appear. After the > prompt appears, type **pip install pyote** as shown below, then press enter:



```
Anaconda Prompt
(C:\Anaconda3) C:\Users\Tony George>pip install pyote_
```

Do not use the Windows Command Prompt window. If you do, you may not get a correct installation. If you must use the Windows Command Prompt window, you must change directories to the Anaconda3 directory.

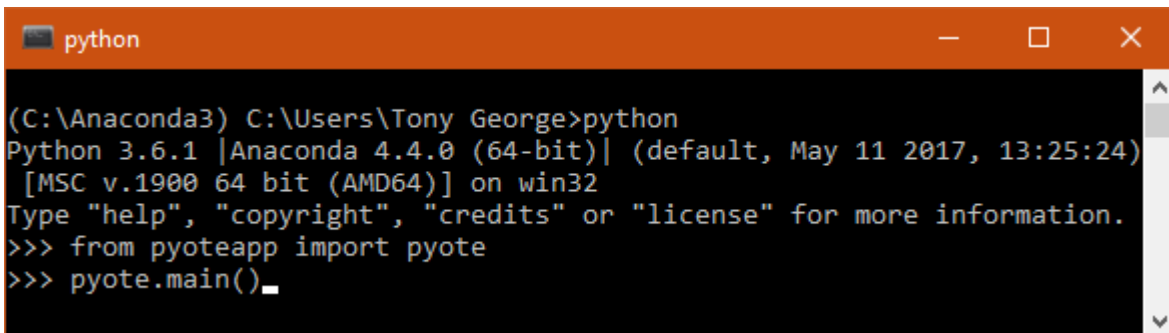
### 3: Run and Test PYOTE installation.

Use the already open the Anaconda3 'Anaconda Prompt' console window, or open a new window if you closed the previous window. Remember, the window may sit idle for some time before you get a prompt if you are opening a new window. Wait for the > prompt to appear. When it does, duplicate the input shown in the example below:

First Line after the > prompt type: **python**

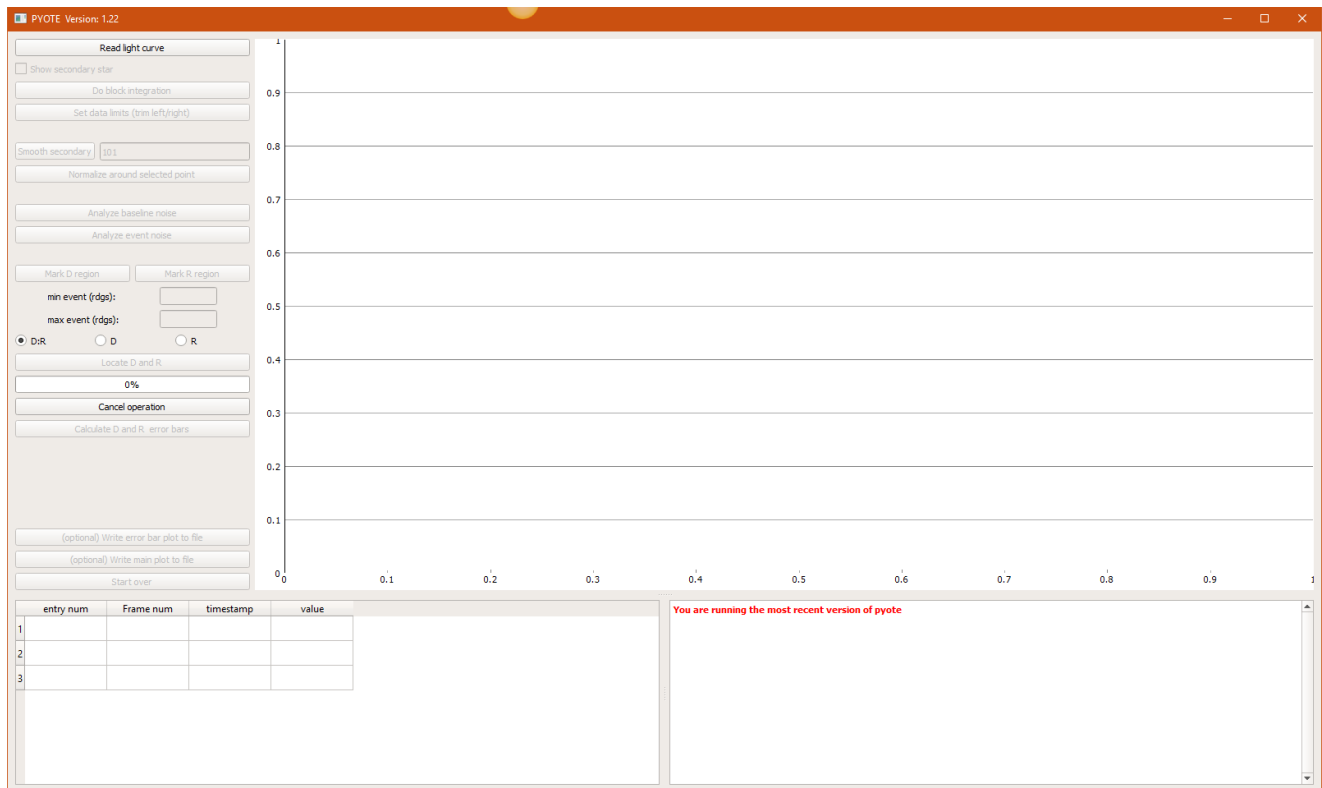
After you get >>> prompt type: **from pyoteapp import pyote**

After you get >>> prompt type: **pyote.main()**



```
python
(C:\Anaconda3) C:\Users\Tony George>python
Python 3.6.1 |Anaconda 4.4.0 (64-bit)| (default, May 11 2017, 13:25:24)
[MSC v.1900 64 bit (AMD64)] on win32
Type "help", "copyright", "credits" or "license" for more information.
>>> from pyoteapp import pyote
>>> pyote.main()_
```

That sequence should result in the PYOTE application appearing as shown below:



Note: If you have the latest version, the text in the PYOTE 'log' box at the bottom of the screen will read:

**You are running the most recent version of pyote**

If you don't have the most recent version, Prior to PYOTE running, a prompt screen will appear asking you if you want to update to the new version. You can select 'Yes' or 'No'. If you select 'Yes', read the text in PYOTE 'log' box at the bottom of the screen and follow the instruction for restarting PYOTE.

#### 4. Add desktop icon to simplify starting up PYOTE

The procedure shown in step 3 can be used to start up PYOTE, but creating a desktop icon will simplify start-up (and you won't have to remember the command sequence!).

Use a text editor like Notepad to create a file on your desktop. I call the file run-pyote.py The name is not important, but the extension must be **py**. Here is a session that created the file on a Windows system:

A screenshot of a Notepad window titled "Untitled - Notepad". The window has a menu bar with "File", "Edit", "Format", "View", and "Help". The text area contains two lines of Python code: `from pyoteapp import pyote` and `pyote.main()`.

Save the above file as 'run-pyote.py' to your desktop. Be sure and use the .py extension. Save the file as a .txt file.

Before you can use this shortcut object, you must first 'associate' this .py extension with Python.exe. Right click on the object, click on Properties, then click on 'Change'. A submenu will appear where you can change the 'association' to Python.exe. Python.exe resides in the Anaconda3 folder. You will have to manually browse your computer to find the Python.exe program. When you find it, click on it and then direct the association menu to associate the .py extension to Python.exe. When done, click the 'Apply' button to apply the .py association to Python.exe. Then click OK. This will result in a nice little desktop icon that looks like this:



Double-clicking that icon will now start up PYOTE.

Bonus:

From time to time, new versions of PYOTE might be released. To get the latest version of PYOTE, simply open the run-python.py object, if a new program is available, click the 'Yes' prompt. Follow the instruction on the PYOTE 'log' box at the bottom right of the GUI screen.

Congratulations, you have now installed PYOTE. User instructions are provided in text boxes that appear when you 'hover' the cursor over a menu selection. You must first open a file to be able to 'turn on' all the menu items. Open a .csv file for an occultation event you

want to analyze. Hover the cursor over active menu items and read each menu selection text box carefully before executing any menu items. Once you have read all the text boxes, go ahead and proceed with your analysis of the .csv file light curve.